



Solideal SKZ E3/L3

Tires for Wheel Loaders

We Are All About Getting the Job Done. **For Less.**

The Solideal SKZ wheel loader tire features a unique, non-directional, extra deep tread that provides an ideal tire solution for heavy-duty, mixed and hard surface applications. That's our Lowest Operating Cost Solution (LOCS).



Non-Directional Extra Deep Tread

- Massive tread depth for improved tread life and resistance to punctures



Massive Lug-to-void Ratio

- For excellent durability and resistance to tread impacts

Heavy Duty Carcass Construction

- For enhanced stability and side impact resistance



Solideal

HI-PERFORMANCE TIRES

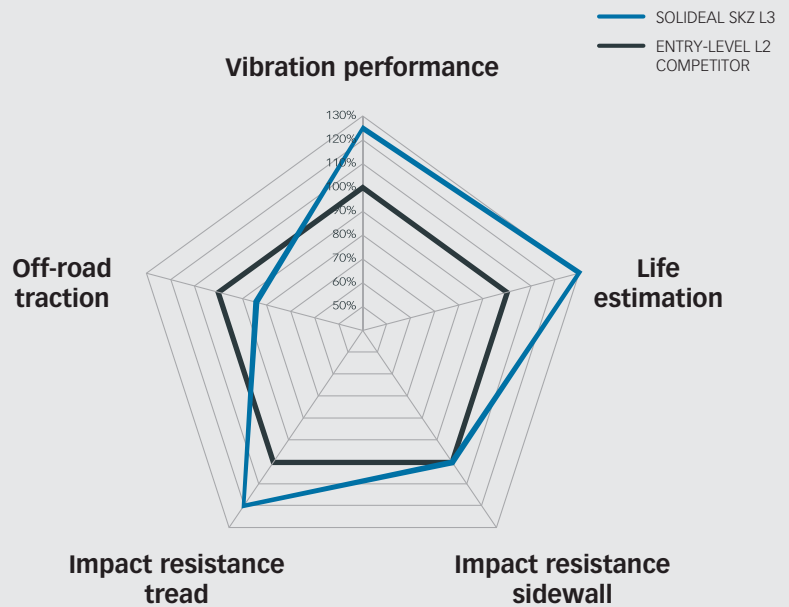
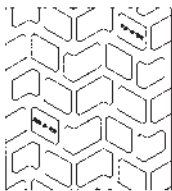


Additional Facts About the Solideal SKZ E3/L3 Tires for Wheel Loaders

Tire Specifications

TIRE SIZE	PR	ACTUAL TIRE DIMENSIONS [mm] [inch]			LOAD INDEX (*)	SPEED SYMBOL	TRA CODE	MAXIMUM TIRE LOAD [kg] [lb] versus INFLATION PRESSURE [bar] [PSI]				
		O.D.	O.W.	O.T.D. [mm] [32nd]				2.50	2.75	3.00	3.25	3.50
								36	39	43	46	50
20.5-25	16	1505	561	33	181	A2	L3	6700	7100	7500	7900	8250
								14800	15650	16550	17450	18200
		59.3	22.1	42	156	A8	G3	-	-	-	-	-
								-	-	-	-	-
		167	B	E3	5150	5450	-	-	-			
					11350	12050	-	-	-			

The Solideal SKZ wheel loader tire has a unique non-directional tread pattern for excellent traction and wear resistance on mixed and hard surface applications.



Authorized Distributor:

