



Solideal SL G3

Tires for Motor Graders and Telehandlers

We Are All About Getting the Job Done. **For Less.**

The Solideal SL G3 is a heavy-duty non-directional telehandler tire solution. It combines excellent durability and impact resistance with enhanced stability. That's productivity. That's our Lowest Operating Cost Solution (LOCS).



Engineered Non-directional Tread Pattern

- Optimized traction on mixed and hard surfaces
- Flatter tread profile for even wearing and excellent stability
- Deep tread for longer life



Reinforced Tapered Tread

- Optimized tread wear rate for extended life and durability

Heavy-duty Carcass

- Increased impact resistance and stability





Additional Facts About the Solideal SL G3

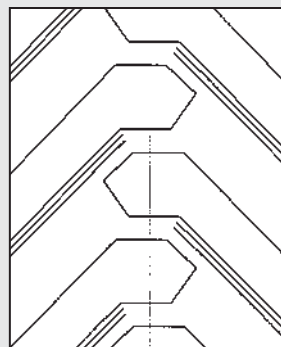
Tires for Motor Graders and Telehandlers

Tire Specifications

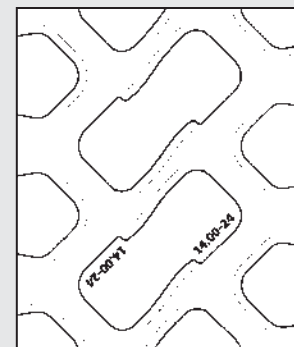
TIRE SIZE	PR	TREAD PATTERN	RIM SIZE		ACTUAL TIRE DIMENSIONS [mm] [inch]			MAXIMUM TIRE LOAD [kg] [lb] versus INFLATION PRESSURE [bar] [PSI]						
			Recommended	Alternative	O.D.	O.W.	O.T.D. [mm] [32nd]	1.25	1.50	1.75	2.00	2.25	2.50	2.75
								18	21	25	29	32	36	39
13.00-24 TG	12	L3	8.00TG	10.00VA 9.00DC	1303	367	28	1700	1900	2060	2240	2360(10)	2500	2650
					51.3	14.4	35	3750	4200	4550	4950	5200(10)	5500	5850
14.00-24 TG	12	L3	8.00TG	10.00VA 9.00DC	1354	385	30	2060	2300	2500	2650	2800	3075(12)	3250
					53.3	15.2	38	4550	5100	5500	5850	6200	6800(12)	7150
14.00-24 TG	16	L3	10.00VA	-	1338	393	30	2060	2300	2500	2650	2800	3075(12)	3250
					52.7	15.5	38	4550	5100	5500	5850	6200	6800(12)	7150

The higher lug-to-void ratio offered by SL G3 provides significantly greater durability and stability with improved ride quality. Tread impact resistance is also enhanced. Operators can expect a lower cost per hour with reduced downtime due to flat tires.

Solideal SL G2
Lug-to-void: 45.7%



Solideal SL G3
Lug-to-void: 50%



Authorized Distributor:

