



Solideal Safetymaster SKS

Tires for Skid Steer Loaders

We Are All About Getting the Job Done. **For Less.**

The Solideal Safetymaster SKS is a solid skid steer tire solution combining durability and flat-free performance for off-road applications. That's our Lowest Operating Cost Solution (LOCS).



Full Solid Construction

- Maximizes sidewall protection
- Excellent puncture resistance
- Excellent stability



Hauler Stepped Tread Design

- Maximizes tread cleanout in off-road conditions for improved traction

Reusable Wheel

- No need to purchase wheel at every change
- Quick fit design eliminates need for component rings for easier installation



Solideal

HI-PERFORMANCE TIRES

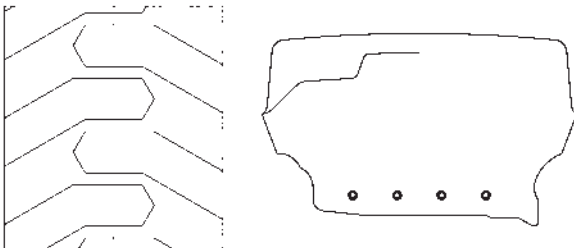


Additional Facts About the Solideal Safetymaster SKS Tires for Skid Steer Loaders

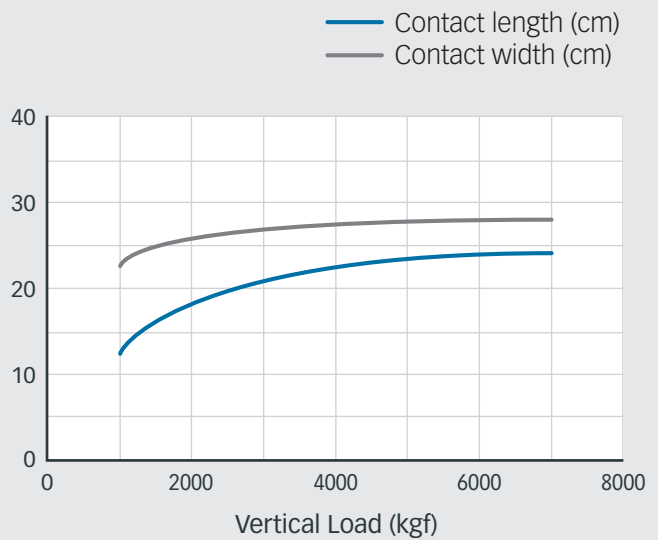
Tire Specifications

TIRE SIZE	RIM SIZE	ACTUAL TIRE DIMENSIONS [mm] [<i>inch</i>]			HEEL		LOAD CAPACITY [kg] [<i>lb</i>]						
							Counterbalanced lift trucks		Other vehicles			Static	
		O.D.	O.W.	O.T.D. [mm] [32nd]	Normal	Quick	Load wheel		Steering wheel	6 km/h 4 mph	10 km/h 6 mph	25 km/h 16 mph	0 km/h 0 mph
31x10-20	7.50	781	237	33	-	■	-	-	-	4030	3660	3100	4680
		30.7	9.3	42			-	-	-	8900	8100	6850	10350
33x12-20	7.50	831	287	40	-	■	-	-	-	5200	4720	4000	6040
		32.7	11.3	50			-	-	-	11500	10400	8850	13350
36x14-20	7.50	909	326	43	-	■	-	-	-	6175	5605	4750	7175
		35.8	12.8	54			-	-	-	13650	12350	10500	15850

The Safetymaster SKS is a full-sized solid skidsteer tire solution that maintains original equipment dimensions and improves stability.



33x12-20 7.50 SKS



Authorized Distributor:

